



# Logistics

## eSignature Document Workflow Software for Logistics

In a sector that is constantly on the move and expected to deliver with precision, we help streamline operations and enhance efficiency with eSignatures workflow for logistics companies. Increase accuracy and save time by obtaining approvals and eSignatures faster.

*Confidence in Efficiency.*

## Digitising the Logistics Sector

In an industry where mistakes cost money, efficiency and accuracy are paramount in the logistics sector. The Digital Logistics Sector is rapidly evolving, with companies seeking innovative eSignature solutions to streamline operations and enhance productivity. SigniFlow's cutting-edge eSignature workflow automation and digitisation tool offers the perfect solution.

## An eSign Automation Tool That Brings It All Together

SigniFlow's advanced eSign automation tool is a reliable solution for the logistics sector. It revolutionises operations by integrating all necessary processes into one cohesive platform. Whether managing contracts, delivery receipts (PODs), or regulatory documents, SigniFlow ensures that every step is digitised and secure, significantly reducing errors. This not only accelerates the entire logistics workflow but also enables quicker turnaround times and improved customer satisfaction.

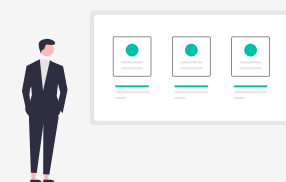
### LOGISTICS ADMINISTRATION



#### Increased Efficiency

Managing logistics administration can be daunting, with piles of paperwork and endless manual processes leading to a time-consuming process. SigniFlow simplifies this by digitising and automating document workflows. Our platform allows for easy tracking, signing, and storing of all logistical documents, ensuring that your administration is always up-to-date and compliant with industry regulations.

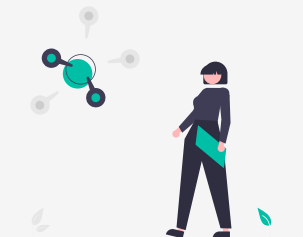
### DIGITISATION AND ORGANISATION



#### Streamlined Processes

With SigniFlow, digitisation and organisation go hand in hand. Our system streamlines every aspect of logistics, from order processing and inventory management to delivery coordination and customer communication. By digitising routine tasks, you can focus on strategic operations, improve turnaround time, and reduce operational costs.

### AUTOMATION



#### Integration

By integrating your logistics systems with SigniFlow's eSign automation API, you can drastically reduce manual effort, reduce human error and speed up document delivery and efficiency. This tool significantly reduces the need for physical documents, making your logistics processes leaner and greener. A well-designed, automated logistics process enables successful digital operations, improves scalability, and lets you create engaging digital experiences for your customers.

For more information on the benefits of eSignature workflow software for Logistics, please visit our [Blog Article](#).

