



Automotive

In an industry where precision and efficiency are crucial, we specialise in accelerating service delivery within the automotive sector. SigniFlow provides cutting-edge eSignature solutions tailored to the specific needs of the automotive industry. With SigniFlow, automotive businesses can streamline document workflows, enhance security measures, and boost operational efficiency.

The Digital Automotive System

In the digital automotive landscape, SigniFlow excels in streamlining critical processes specifically tailored for the automotive industry through advanced document management and workflow automation. It accelerates procurement with real-time tracking and seamless approvals, enhancing supply chain efficiency. Secure document storage and comprehensive audit trails ensure compliance, while automated creation and centralised storage benefit contract management within the complex automotive environment. SigniFlow also strengthens quality assurance, human resources, sales, customer service, and sustainability reporting within the automotive sector. For sustainability, we support eco-friendly initiatives and regulatory compliance within the automotive industry. By promoting secure document sharing and workflow efficiency designed for the automotive sector.

A tool that brings it all together, delivering seamless efficiency and convenience

Automotive professionals have spoken, and we've listened. We understand the industry's unique demands. Delivering electronic documents swiftly while ensuring compliance is a delicate balance. From managing supplier contracts to handling dealership agreements, each aspect of the automotive sector presents its own challenges. Customers expect fast and convenient service, while regulatory standards require strict compliance. SigniFlow delivers both speed and convenience for handling documents on the front-end, while ensuring compliance with industry regulations on the back-end.

You need more than just an eSign solution; you need a tool that comprehends the complexities of the automotive industry.

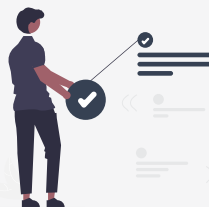
THE DIGITAL AUTOMOTIVE INDUSTRY



Streamlined Document Management

SigniFlow enhances digital transformation by automating document workflows and ensuring secure, efficient handling of all automotive-related documents, from supplier agreements to customer contracts.

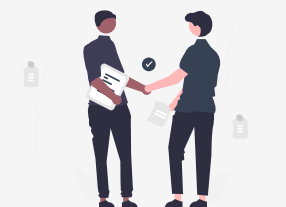
CONVENIENT AUTOMOTIVE PROCESSES



Fast and Efficient Transactions

SigniFlow speeds up automotive processes by enabling rapid electronic document signing and processing, reducing administrative delays and improving overall operational efficiency.

MEANINGFUL ENGAGEMENT



Enhanced Customer Interaction

SigniFlow fosters meaningful engagement by providing a seamless experience for customers through easy-to-use electronic signatures and real-time document tracking, enhancing satisfaction and trust for you and your consumer.

