

## eSignature for retail

Today's retail environment demands speed, compliance, and efficiency. Manual paperwork slows transactions, increases errors, and frustrates both customers and staff.

With eSign technology, retailers can streamline approvals, enhance security, and stay compliant—eliminating paper inefficiencies, cutting costs, and boosting productivity. In a digital-first world, eSign isn't optional—it's essential to stay competitive.



### The urgent need for a smarter, automated retail process

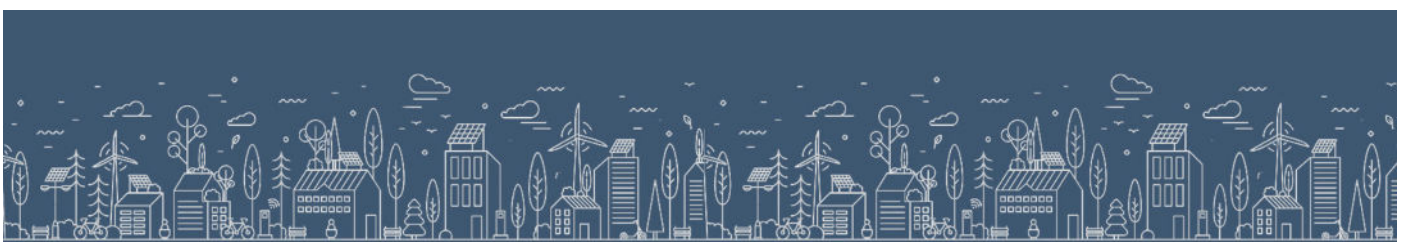
An eSign solution is key to overcoming retail challenges—eliminating inefficiencies, speeding up transactions, and improving customer satisfaction. Beyond convenience, it ensures compliance with evolving regulations and keeps retailers competitive in a digital world.

To stay ahead, retailers need a secure, compliant, and agile digital-first approach—and that's exactly what an eSign solution delivers.

### Digitising retail process workflows

In today's retail landscape, efficiency is non-negotiable. Without an eSign solution for the retail industry, businesses risk falling behind, losing customers, and facing unnecessary compliance risks.

**Make every transaction smooth, secure, and seamless—with an eSign solution built for retail.**



We believe in a digital future that sustains life on earth

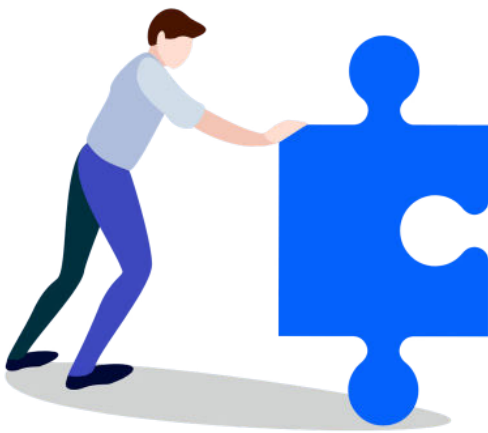
## Transforming retail with digital signing

An eSign solution for the retail industry replaces outdated manual processes with digital efficiency. By enabling businesses to send, sign, and store documents electronically, transactions move faster, compliance becomes simpler, and paperwork-related delays disappear.



### Key advantages include:

- ➔ **Security & compliance** – Encrypted, legally binding signatures aligned with eIDAS and E-SIGN standards
- ➔ **Faster transactions** – Speeds up approvals and contracts for quicker turnaround
- ➔ **Seamless integration** – Connects easily with CRM systems to streamline workflows
- ➔ **Customer-centric experience** – Enables smooth in-store and remote signing
- ➔ **Cost efficiency & sustainability** – Reduces admin, printing costs, and supports paperless operations



## Elevate retail efficiency with SigniFlow

SigniFlow's eSign solution for the retail industry empowers businesses with a secure, compliant, and highly efficient digital signing experience. Built for scalability, it caters to retailers of all sizes—whether you're a boutique store or a nationwide chain.

With features like advanced authentication, automated workflows, and audit trails, SigniFlow's eSign ensures that every document signed is legally sound and securely stored.

## Across the enterprise

Discover how SigniFlow connects enterprise teams.

### PROCUREMENT



➔ LEARN MORE

### SALES



➔ LEARN MORE

### HR



➔ LEARN MORE

### LEGAL



➔ LEARN MORE

### FINANCE



➔ LEARN MORE

# Find out why these great companies are all digitising their processes with SigniFlow



With 240+ dealerships scattered across thousands of kilometers selling hundreds of luxury vehicles per week, the BMW group of financiers needed to automate their sales, finance, and insurance processes.

Learn how SigniFlow integrated and fully automated these complex business processes and how we continue to deliver on BMW's digital customer experience promise.

[READ MORE](#)

Absa Group Limited is listed on the JSE and is one of Africa's largest diversified financial services groups, with a presence in 12 countries across the African continent, as well as offices in the United Kingdom and the United States.

Learn why ABSA decided on SigniFlow as their primary solution for process digitisation, document and workflow approvals, and contract signing.

[READ MORE](#)

LOMBARD  
Partnerships

With over 30 years in specialised risk, Lombard Insurance sought to digitise and automate its intermediary onboarding and management processes.

SigniFlow delivered a comprehensive Intermediary Management System (IMS) with automated contracts and back-office integration for seamless partner access and efficiency.

[READ MORE](#)

NASHUA



RICOH  
imagine. change.

SINTREX



## 24/7 Online support

We understand your office hours. SigniFlow offers 24/7 online support to all customers.

No matter where you are and no matter what time it is, we are always online to help you meet your deadlines.

[CONTACT US NOW](#)

### SigniFlow

International Contact Centre Telephone: 002710 300 4898

SOUTH AFRICA Telephone: +27-10-300-4899, UK & EU Telephone: +44-208-611-2681,

AMERICAS Telephone: +1-603-229-8702, ASIA PACIFIC Telephone: +61-3-9623-2262

[www.signiflow.com](http://www.signiflow.com)

