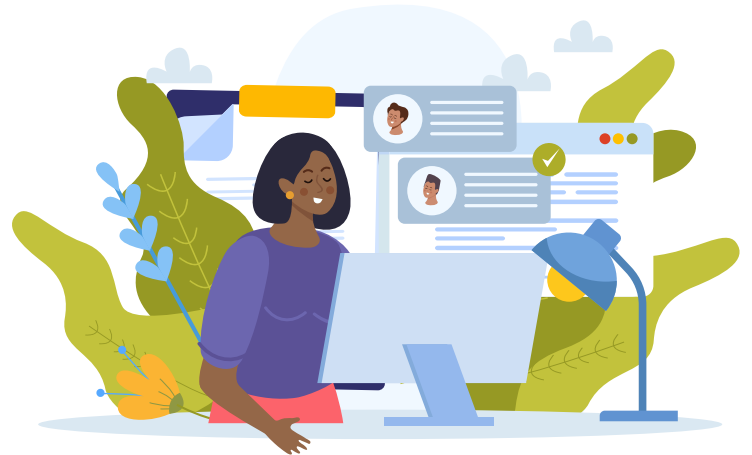




The eSign Human Resources solution that understands the HR process



eSignature Document Workflow for Human Resources (HR) Departments.

The importance of carrying out crucial HR processes properly cannot be understated. Yet, the HR department is often overlooked, leaving HR workers swamped with paperwork and onerous physical filing systems.

Learn why HR teams love SigniFlow

HR Portfolios

SigniFlow offers a document portal where HR documents, contracts and policies can be centrally managed.

HR Portfolios can be shared with anyone, while you maintain full control over access rights.

Give employees access to upload documents while they eSign, or directly upload docs into the portal. The system will notify you of any changes via email.

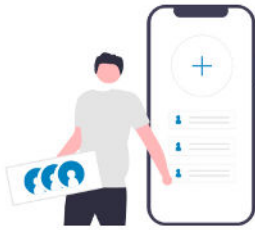
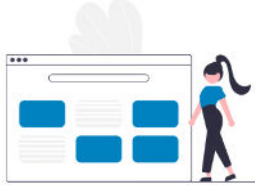

All signed contracts are neatly filed together with their supporting documentation, creating an organised portal where documents can be easily found and managed.



A tool that brings it all together and puts you in charge

HR departments everywhere have spoken and we've listened. We get you. Dealing with a wide range of issues, documents and people throughout all business departments, is a complicated task.

You need more than just eSign workflow, you need a tool that understands your day at the office.

<h3>Remote HR Onboarding</h3>  <p>Easily overcome challenges of remote hiring Integrate SigniFlow with your existing HR tools, or use it as a stand-alone system. Either way, onboarding new employees using SigniFlow HR Portfolios is a breeze.</p>	<h3>HR Document Portal</h3>  <p>You are in control Create an HR Portfolio in minutes. Share or revoke access as needed. Now anyone with access can eSign and upload supporting documents, and the system will notify you immediately of any changes.</p>	<h3>Less HR admin, more time</h3>  <p>Just imagine the processes and procedures you could implement, if you only had more time HR teams that use SigniFlow have on average 35% more time to spend on streamlining processes, and 15% more time to take a break. Creating reusable electronic forms and templates is a game changer for HR departments.</p>
---	--	--

[LEARN MORE](#)

Across the enterprise

Discover how SigniFlow connects enterprise teams.

PROCUREMENT



[LEARN MORE](#)

SALES



[LEARN MORE](#)

HR



[LEARN MORE](#)

LEGAL



[LEARN MORE](#)

FINANCE



[LEARN MORE](#)



We believe in a digital future that sustains life on earth



Improve eSign process flow

If people are the heart of an organisation, then the HR team is its heartbeat.

The workforce is more mobile that ever before and demands a platform that goes wherever they go.

Now you can reduce the time spent on searching for documents and waiting on line managers to approve processes. eSigning contracts takes minutes, not days or weeks.

Track workflow progress with live audit trails, automated reminders and push-notifications.

Prevent bottlenecks in HR

Knowing where or with whom your documents are, is super simple with SigniFlow.

Your Dashboard is designed to give you full insight over the progress and status of your documents in workflow.

You can drill into detail and see who has already approved, and who still needs to eSign.

You can push urgency notifications to approvers and eSigners via email.



HR teams management

SigniFlow enhances the way that companies interact and engage with its employees. Not all departments and teams are the same, neither are their policies and procedures.

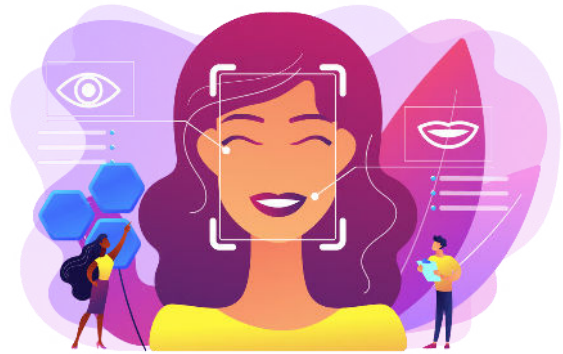
Employees can be grouped into departments and teams. Templates and forms can be shared company-wide, or with a specific department or team.

Thanks to reusable templates, you only need to set things up once.

Know Your Customer

SigniFlow offers basic authentication, two-factor authentication, Digital Identity as well as digital KYC and AML (Anti Money Laundering).

We build and design electronic onboarding systems to help you comply with regulations.



We've gone the extra mile to ensure our Advanced eSignatures are legally binding and compliant with eSign and Privacy legislation.

[LEARN MORE](#)

[REQUEST A DEMO](#)

24/7 Online support

We understand your office hours. SigniFlow offers 24/7 online support to all customers.

No matter where you are and no matter what time it is, we are always online to help you meet your deadlines.

[CONTACT US NOW](#)



SigniFlow

International Contact Centre Telephone: 002710 300 4898

SOUTH AFRICA Telephone: +27-10-300-4899, UK & EU Telephone: +44-208-611-2681,

AMERICAS Telephone: +1-603-229-8702, ASIA PACIFIC Telephone: +61-3-9623-2262

www.signiflow.com

