



Software built to digitise & automate the workplace

SigniFlow is a document-centric digital signature & approval workflow system that neatly slots into any enterprise ecosystem to deliver critical last-mile workflow efficiency.

Total Confidence.



Process Digitisation

Companies of all sizes are under pressure to present customers and employees with a quick and seamless digital experience.



Process Automation

When fully automating business processes, you need a flexible and scalable tool that compliments the end-to-end customer journey.



eSign Workflow

Whether digitising or automating - or both - you need a powerful workflow platform built to support your compliance requirements.

Process Digitisation

D I G I T I S E , A C C E L E R A T E , A N D D E L I V E R

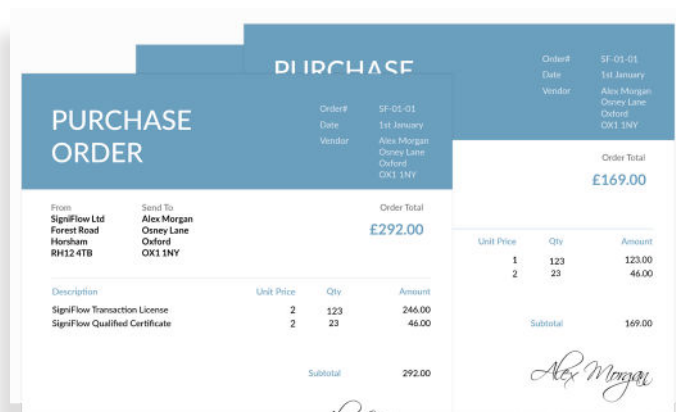
Everyone has become accustomed to receiving electronic contracts, ordering goods online, and approving banking transactions through an app.

Given the speed and convenience of this digital dynamic, employees are left questioning why internal approval processes are so slow and manual.

Customers expect a fast, digital experience when dealing with companies - regardless of their size.

However, many organisations simply don't have the resources to meet these expectations.

That's about to change.



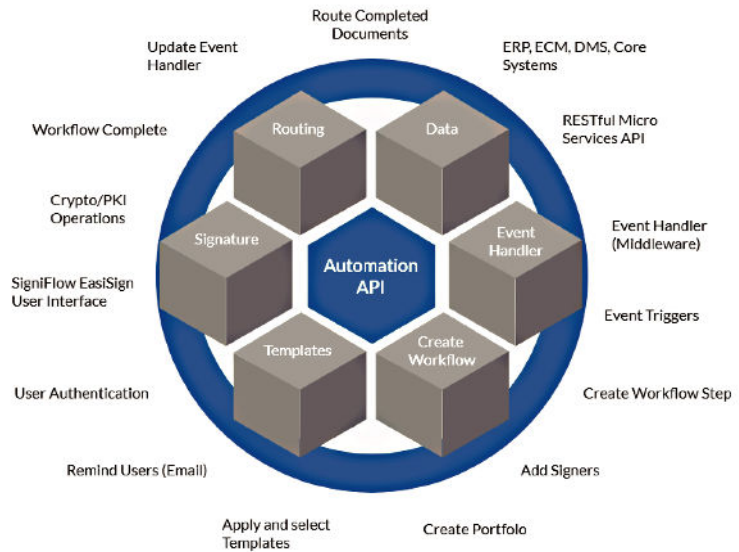
Process Automation

TAKE CONTROL, INTEGRATE, AND AUTOMATE

For your business to stay competitive in today's rapidly changing marketplace, automation has become more than just a "nice to have" - it has become vital to the success of your operations.

Automation drastically reduces manual effort, giving your business breathing room.

Well-designed business process automation enables successful digital operations, improves scalability, and allows you to create engaging digital experiences for your customers.



Licensing the Enterprise

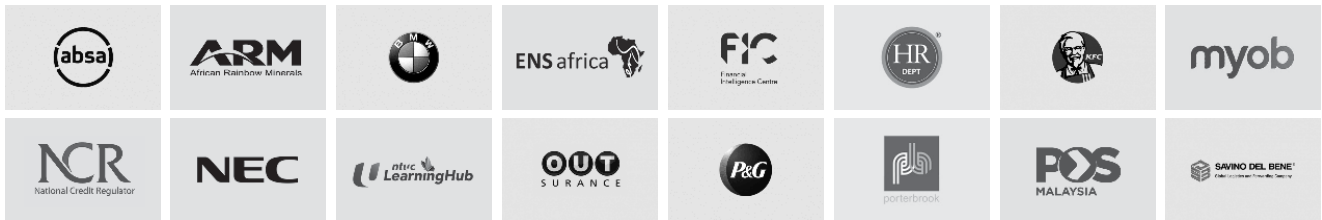
SCALABLE FLAT-RATE PLANS TO
SUIT ANY ENTERPRISE

When it comes to automating business processes end-to-end, paying per envelope, per document, or per transaction is unaffordable.

With SigniFlow's Enterprise licenses, there is one flat annual rate, scalable for unlimited usage.

Find out why more than 20,000 companies have moved to enterprise-based licenses

In a competitive landscape where it's all about service delivery, the business that offers the most convenience, keeps the customer. **Accelerate the digitisation of your business with SigniFlow Software.**



SigniFlow provides more options to fuel the modern enterprise than any of our competitors

SIGNIFLOW PRIVATE TENANT

100%

Our private tenant solutions are 100% compliant with global data residency laws

5X

SIGNIFLOW HOSTED HYBRID

Hosted Private Tenant solutions (Hybrid) accelerate projects up to five times

SIGNIFLOW BUSINESS CLOUD

60%

Up to 60% more cost-effective to implement than our major competitor

8

SIGNIFLOW DATA CENTRES

8 X Data centres covering more than 50 countries in 13 languages

Gartner®

Gartner July 2022 Market Guide for Electronic Signatures

SigniFlow has been acknowledged by Gartner for its alternative licensing schemes.

SigniFlow is a recognised Gartner vendor.

We believe in a digital future that sustains life on earth



Products & Features

Explore our comprehensive product features list for SigniFlow Advanced eSignature Document Workflow, Facial Biometric and KYC solutions, Digital Onboarding, Document Automation, and Document Generation.

Total Confidence.

eSign Workflow



Whether you are looking for a solution to quickly send documents for approval or signing, or an enterprise tool to automate even the most complex business processes, you've found it.

eSign Compliance



Don't confuse our built-in digital signatures with basic electronic signatures. We've gone the extra mile to bring you digital signatures that are legally binding and compliant with eSign regulations.

SigniFlow for SharePoint



Efficient business processes allow for successfully executed business strategies. So, we're always looking for new ways to speed up and smooth out your communications within your business, and with your customers.

SigniFlow for Microsoft Office 365



We're always looking for new ways to boost the functionality of our system, so our customers can work within the platforms they use with ease and speed.

FaceSign - Facial Biometric Signatures



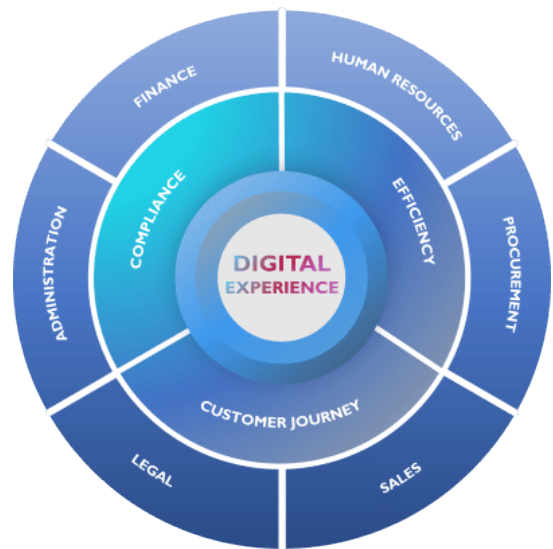
FaceSign is an entirely new form of eSignature that is as simple as taking a selfie, literally. It improves the security of your documents and gives you peace of mind, without compromising the ease of use you've come to know.

Process Digitisation

Processes are one of the major cornerstones of any business. Some are still paper-based, others are partly digital, in that fillable PDFs and emails are used to get employees and customers to fill, approve and sign documents.

SigniFlow helps you fully digitise your business processes, quickly and easily.

Total Confidence.



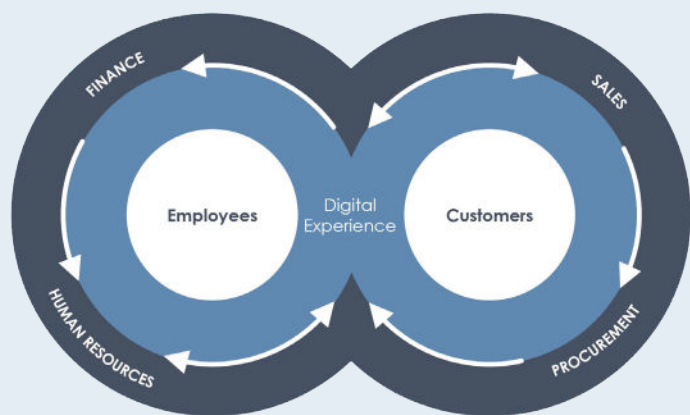
Digital Experience

P O W E R F U L F R O N T - E N D E X E C U T I O N

SigniFlow enables businesses of any size to deliver a smooth and seamless digital experience to both employees and customers.

Employees can easily create workflows to send documents for approval or sign-off, while collecting supporting documents. All documents are neatly grouped in a Portfolio, which can be shared with customers or other departments to complete further tasks.

Customers get what they expect: A fast, fully digital experience that separates your business from the competitors.



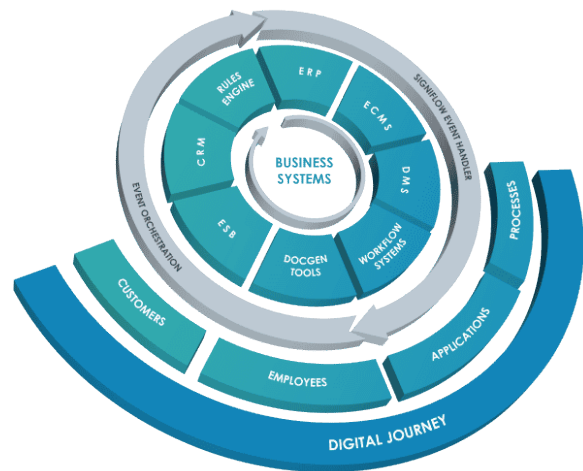
All of this is achieved with a little planning and SigniFlow's off-the-shelf workflow platform.

Event Orchestration

SigniFlow slots into any enterprise ecosystem to deliver critical last-mile workflow efficiency through a microservices-oriented approach and a powerful event orchestration tool.

The Event Handler is a bi-directional middleware platform that fires event updates from SigniFlow to any receiving system, and in turn, receives trigger events to orchestrate workflows.

- Core banking systems
- Financial and accounting systems
- Healthcare and e-scripting systems
- Third-party software applications
- Enterprise Service Bus (ESB)
- Rules- and decision -engines
- Document generation tools (DocGen)
- Customer Relationship Management (CRM)
- Document Management Systems (DMS)
- Enterprise Content Management Systems (ECMS)
- ERP systems
- Workflow systems



SigniFlow makes it possible for any business to unlock the full potential and benefits of digitisation

Based on customer feedback:

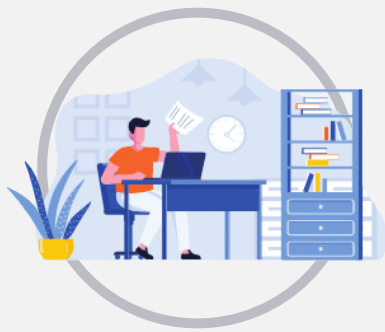


SigniFlow provides more options for fuelling the modern enterprise than any of our competitors

Department Solutions

Across the ENTERPRISE

Discover how SigniFlow connects enterprise teams



PROCUREMENT

Procurement teams have the massive responsibility of managing purchasing policies and procedures to improve organisational efficiency. Being transparent & accountable at all times is a must, but with the multitude of parties and processes involved, this can be a challenge.



SALES

Even after the customer says “yes”, there are processes that must be followed before you can wrap it all up. Nothing like lengthy formalities to take the wind out of your sails. Chaos costs money, manual processes are slow, and red tape is demotivating.



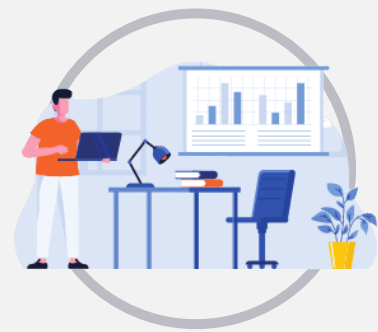
HUMAN RESOURCES

The importance of carrying out crucial HR processes properly cannot be understated. Yet, the HR department is often overlooked, leaving HR workers swamped with paperwork and onerous physical filing systems.



LEGAL

Legal departments are ultimately held accountable for all contracts across the business, yet so many contracts are altered and signed out of sight.



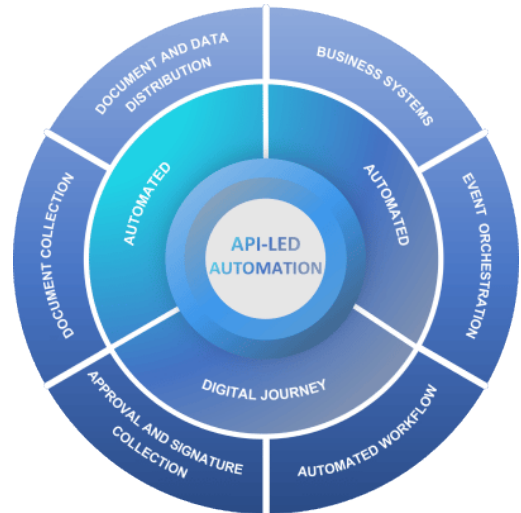
FINANCE

Even using the best accounting systems money can buy, huge process gaps still exist. Systems are mostly tied up with people sending emails to get approvals, and collecting customer documents - which makes producing audit samples a tedious task.

Process Automation

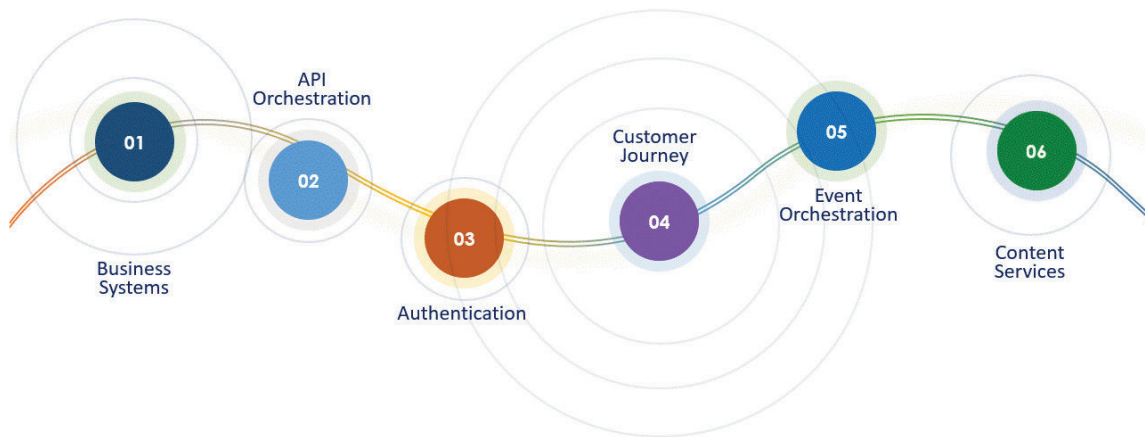
We help you model, orchestrate and execute approval processes and digital signature workflows, enabling faster execution and reduced manual effort.

Total Confidence.



API-led Automation

Due to the complexities of IT architecture, API-led integration forms an important part of any modern process automation strategy. Most processes are triggered by some form of manual data capture, such as web forms or onboarding applications, which in turn push the captured data to one business system, or more, for execution. Most modern business systems (ERP, ECMS, DMS, etc.) have built-in capabilities to kickstart automation. However, these often lack the sophistication needed to give employees and customers a seamless digital experience. SigniFlow's unique approach to API-led integration fills this gap. Our system uses intelligent middleware, which can be configured to execute workflows for approvals and signatures via event orchestration.



SigniFlow fuels automation that improves the customer experience, while drastically reducing manual effort

<p>API-LED AUTOMATION</p> <p>75%</p> <p>Up to 75% reduction in manual effort when processes are fully automated</p>	<p>EVENT ORCHESTRATION</p> <p>6X</p> <p>Some customers have reported up to a 6-fold increase in sales volumes after automating</p>	<p>DIGITAL EXPERIENCE</p> <p>88%</p> <p>Up to 88% of our customers' prefer an end-to-end digital customer journey</p>	<p>ENTERPRISE LICENSING</p> <p>40%</p> <p>Enterprise licences that are up to 40% more cost effective than major automation competitors</p>
---	--	---	--

Industry Solutions



BANKING

In a competitive landscape where it's all about service delivery to the digital citizen, the bank that offers the most convenience, keeps the client.



FINANCIAL SERVICES

Accelerate your contract delivery process by digitising your agreements with SigniFlow for financial services.



INSURANCE

In a competitive landscape where it's all about service delivery to the remote customer, the insurer that offers the most convenience, gets the client.



HEALTHCARE

When people think about healthcare, they think primarily about doctors and nurses. Medical administration serves in the background, but is in many ways the heartbeat of the Healthcare industry.



GOVERNMENT

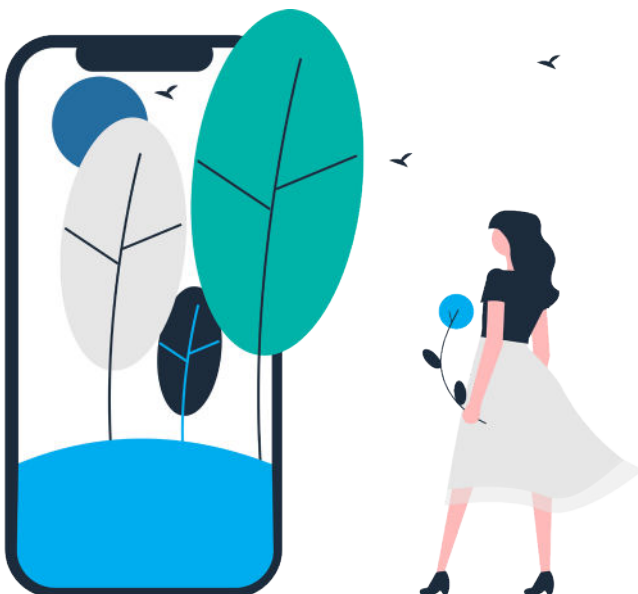
In a sector that is expected to do more for less, we help accelerate service delivery for Government agencies.



LEGAL

In the legal sector, contracts are scrutinised down to the minutest details, and a signature is worth its weight in gold.

T H E E N V I R O N M E N T



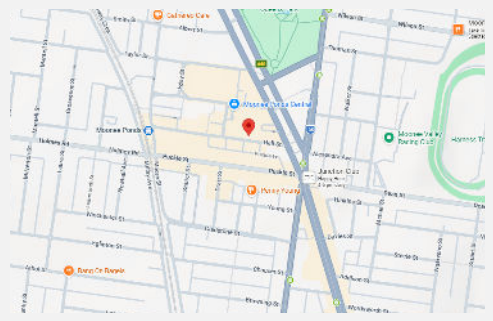
How many trees does your office use?

It takes 24 trees to make 1 ton of office paper. In other words, 1 tree makes 16.67 reams of paper, or 1 ream = 6% of one tree. To put this in perspective, an average office of 50 people, each using three reams of paper per month, use around 108 trees per year. With SigniFlow, the same office uses around 2 trees per year.

ASIA PACIFIC

T: +61(0)3-8538-1077
 E: salesleads@signiflow.com
 www.signiflow.com

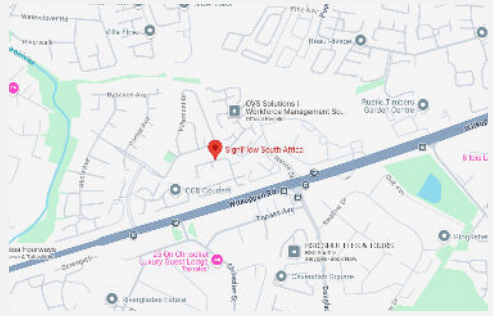
Waterman Workspaces
 Suite 20, Level 2
 21-31 Hall St,
 Moonee Ponds VIC 3039



SOUTH AFRICA

T: +27-10-300-4899
 E: support@signiflow.com
 www.signiflow.com

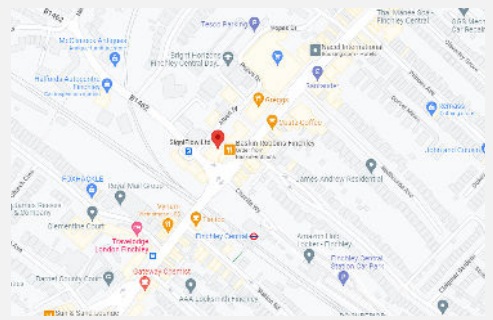
Waterford Office Park
 Waterford Drive, Building no 12
 Maroedal, Randburg, 2194



UNITED KINGDOM

T: 01403-800-345
 E: sales.uk@signiflow.com
 www.signiflow.co.uk

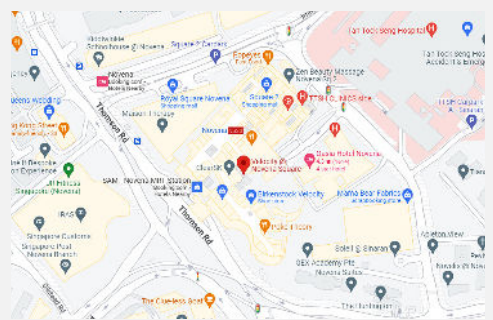
Central House
 1 Ballards Lane, London, N3 1LQ
 United Kingdom



SINGAPORE

T: +1 646 346 6059
 E: sales.asiapacific@signiflow.com
 www.signiflow.sg

238A Thomson Road
 #25-07, Novena Square
 Singapore 307684



UNITED STATES

T: +65 3105 1257
 E: sales.us@signiflow.com
 www.signiflow.us

8 The Green STE A,
 Dover, Delaware,
 19901

